

The background of the entire page is a repeating pattern of stylized human silhouettes and colored circles. The silhouettes are in profile, facing right, and are divided vertically into two halves. The colors used for the silhouettes and circles are mustard yellow, light purple, dark teal, and light grey. The circles are also divided vertically into two halves, with the top half being a different color from the bottom half. The overall effect is a dense, colorful, and textured background.

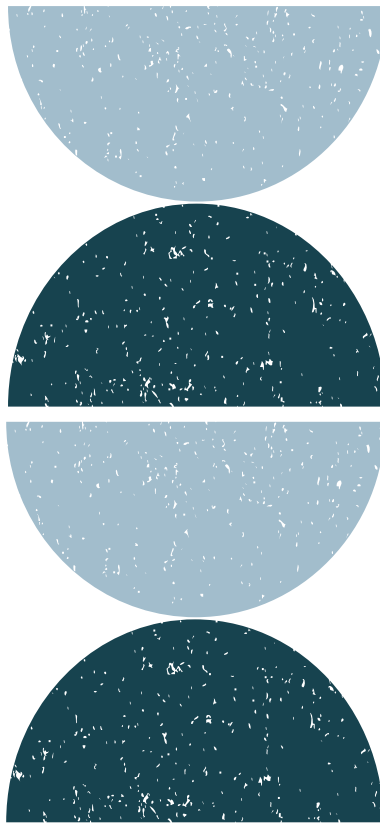
# **2024 ANTI-HUMAN TRAFFICKING NATIONAL IMPACT REPORT**

2024 NATIONAL IMPACT REPORT IDENTIFYING  
& SERVING SURVIVORS OF HUMAN  
TRAFFICKING ACROSS THE UNITED STATES



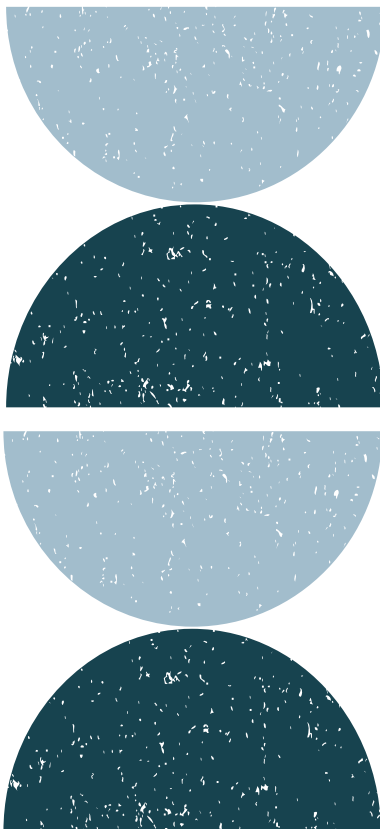
**SA JUSTICE**  
*on earth, as it is in heaven*





**BUT LET JUSTICE ROLL DOWN  
LIKE WATERS,  
AND RIGHTEOUSNESS  
LIKE AN EVER-FLOWING STREAM.**

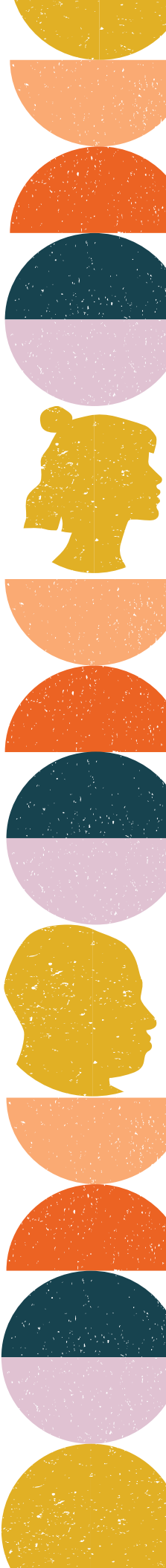
**AMOS 5:24 ESV**



## HOW THE SALVATION ARMY FIGHTS HUMAN TRAFFICKING IN THE UNITED STATES

The Salvation Army has historically been on the frontlines fighting human trafficking since the time of William and Catherine Booth in London, England—advocating to raise the legal age of consent to sexual acts. We have come a long way, but the battle is far from over. The Salvation Army is opposed to the corrupt abuse of power against other human beings for personal and economic gain that is inherent in trafficking. We believe, therefore, that we have the responsibility, both individually and collectively, to work for the liberation of those who have been enslaved in this manner, and to establish the legal and social mechanisms to stop human trafficking.

“‘For I know the plans I have for you,’ declares the LORD, ‘plans to prosper you and not to harm you, plans to give you hope and a future.’”  
Jeremiah 29:11





## HIGHLIGHTS ACROSS THE UNITED STATES

- Migrant outreach and collaboration with legal service providers to identify and serve survivors of labor trafficking across the United States.
- 38 trafficking specific and trafficking integrated programs across the nation.
- 110 staff members holding anti-trafficking positions.
- Anti-trafficking staff present in every Salvation Army territory across the United States.
- Office for Victims of Crimes (OVC) funded programs across the nation.
- Drop-in centers and residential programs serving survivors.
- Expert awareness events and training provided to individuals across the nation in various disciplinary backgrounds such as law enforcement, social services, healthcare, businesses, faith-based communities, and educational institutions.
- Representation in The Salvation Army Caribbean and North American MSHTR Council working to strengthen The Salvation Army's initiatives.



The background of the entire page is composed of a grid of overlapping circles. Each circle is divided vertically into two halves of different colors. The colors used include orange, grey, yellow, purple, and dark blue. In the upper right quadrant, there is a yellow silhouette of a woman's head and shoulders in profile, facing right.

# ***FIGHT FOR FREEDOM*** **ACTION PLAN**

**1**

AWARENESS & TRAINING

**2**

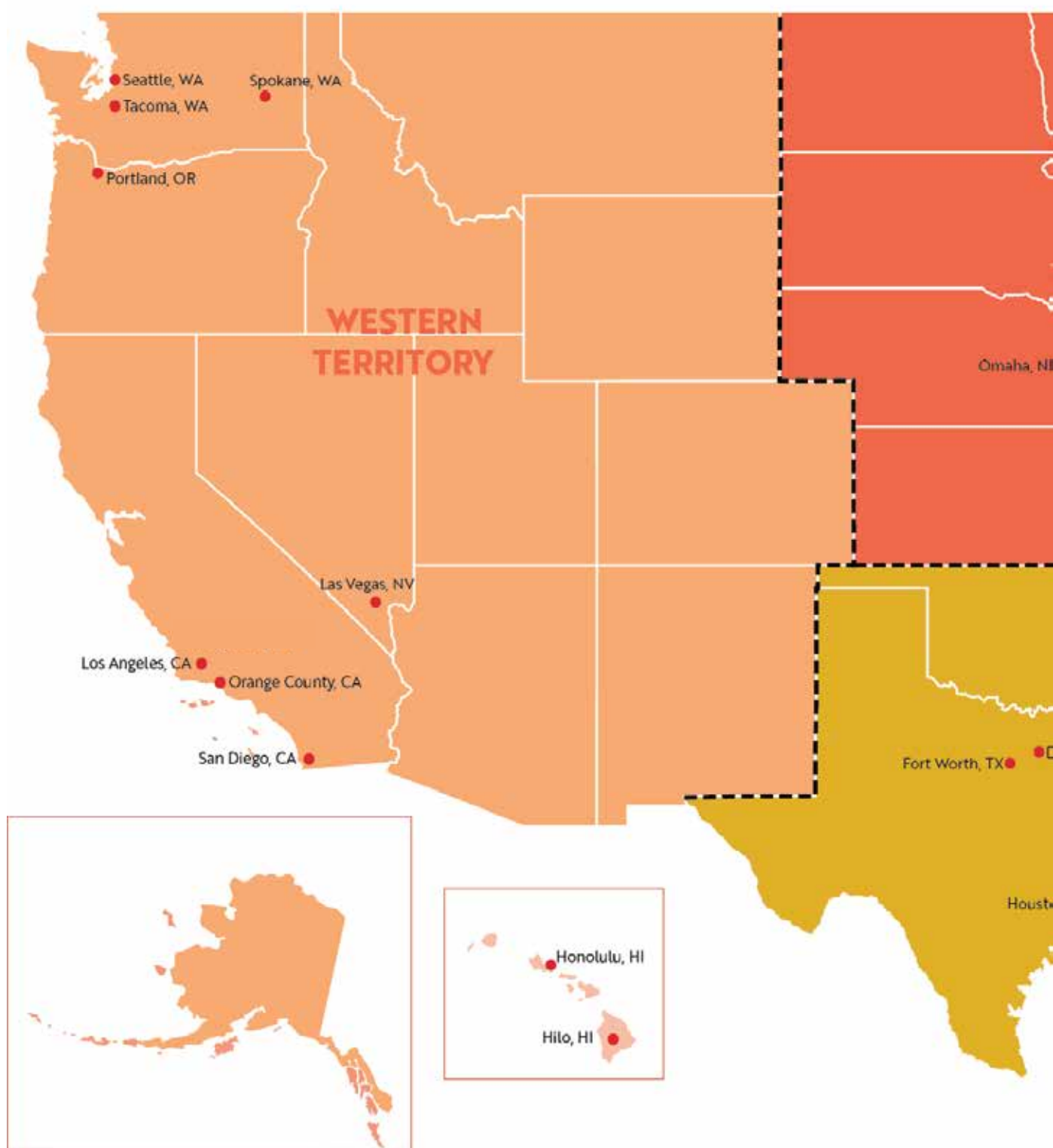
PREVENTION & OUTREACH

**3**

SURVIVOR SERVICES

**4**

PARTNERSHIPS & ADVOCACY







For more information on  
specific services provided at  
each location please visit  
[sajustice.us/fight-for-freedom](https://sajustice.us/fight-for-freedom)



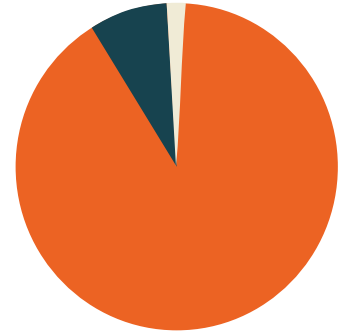
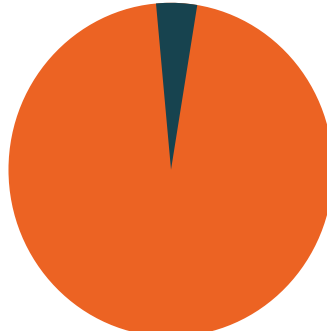
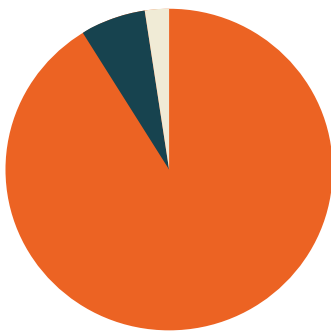
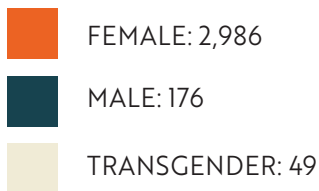
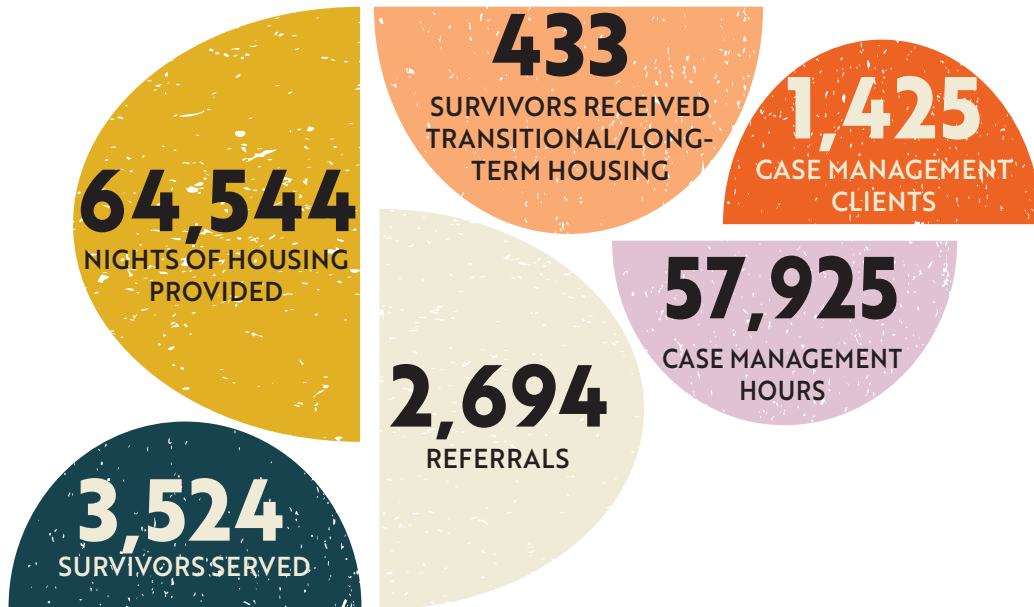
# TRAINING AWARENESS PREVENTION OUTREACH

- **14,786** INDIVIDUALS TRAINED
- **1,720** SALVATION ARMY STAFF AND OFFICERS TRAINED
- **624** AWARENESS, PREVENTION & OUTREACH EVENTS HOSTED
- **37,717** PEOPLE REACHED IN AWARENESS, PREVENTION & OUTREACH EVENTS
- **10,601** PEOPLE PARTICIPATED IN ANNUAL DAY OF PRAYER IN SEPTEMBER 2024



# SURVIVOR

## SERVICES & RECOVERY IMPACT



## PARTNERSHIP & ADVOCACY IMPACT

### 562 LOCAL PARTNERSHIPS

THE SALVATION ARMY RECOGNIZES WE CANNOT DO THIS WORK ALONE. WE ARE THANKFUL TO HAVE STRONG COLLABORATIONS WITH LOCAL PARTNERS IN THE FIGHT AGAINST HUMAN TRAFFICKING.

### 59 TASK FORCES & COALITIONS

WE ARE GRATEFUL TO BE A PART OF TASK FORCES AND COALITIONS ACROSS THE COUNTRY. WE VALUE A MULTI-DISCIPLINARY APPROACH AS WE BELIEVE IT CREATES A MORE HOLISTIC EXPERIENCE FOR SURVIVORS. THESE TASK FORCES AND COALITIONS ARE COMPRISED OF LAW ENFORCEMENT, SOCIAL SERVICES, MEDICAL STAFF, PRACTITIONERS, SURVIVORS AND MORE.

THE INTERNATIONAL LABOR ORGANIZATION (ILO) ESTIMATES THAT THERE ARE **50 MILLION PEOPLE ENSLAVED** IN THE WORLD TODAY.

### GLOBAL HUMAN TRAFFICKING STATISTICS

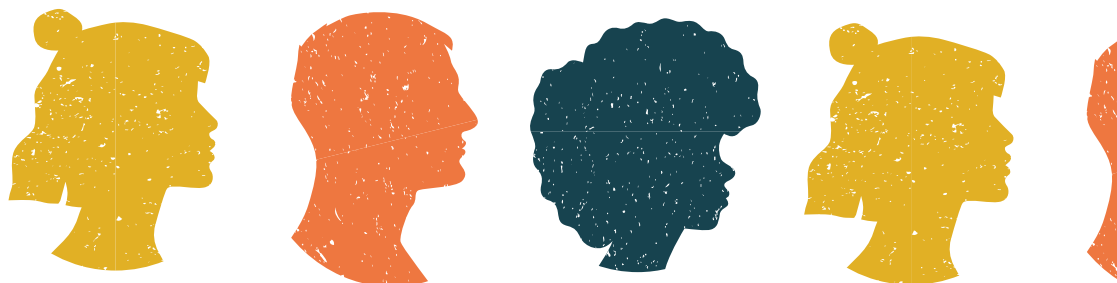
THE INTERNATIONAL LABOR ORGANIZATION (ILO) ESTIMATES THAT HUMAN TRAFFICKING GENERATES **\$150.2 BILLION IN ILLEGAL PROFITS** EACH YEAR.

**COUNTRIES OF ORIGIN  
FOR SURVIVORS SERVED  
BY THE SALVATION ARMY  
UNITED STATES IN 2024:**

ARGENTINA  
BRAZIL  
CANADA  
CHINA  
COLUMBIA  
DENMARK  
DOMINICAN REPUBLIC  
EL SALVADOR  
ETHIOPIA  
GERMANY  
GHANA  
GUATEMALA  
GUINEA  
GUYANA  
HAITI  
HONDURAS  
INDIA  
JAMAICA  
KAZAHKSTAN  
KENYA  
LIBERIA  
MEXICO  
NIGERIA  
PAKISTAN  
PALESTINE  
PERU  
PHILIPPINES  
POLAND  
PUERTO RICO  
RUSSIA  
SAUDI ARABIA  
SYRIA  
THAILAND  
TURKEY  
TURKS & CAICOS  
UKRAINE  
UZBEKISTAN  
VENEZUELA



**HUMAN  
TRAFFICKING  
IS A GLOBAL  
PROBLEM**

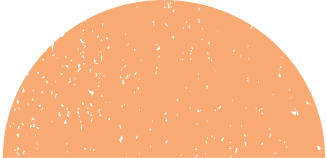
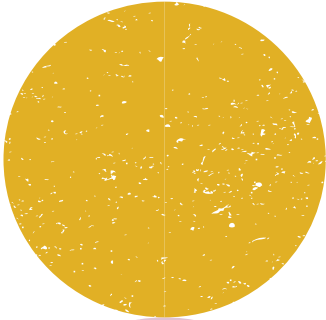






# **SUCCESS STORIES**

## CENTRAL TERRITORY MINNEAPOLIS, MN



AT TIMES, THE MOST MEANINGFUL WAY WE CAN ASSIST SURVIVORS OF HUMAN TRAFFICKING IS BY OFFERING BRIEF SUPPORT ON THEIR JOURNEY, EVEN IF WE DON'T HAVE A TRAFFICKING-SPECIFIC PROGRAM IN THE AREA.

ONE SUCH CASE OCCURRED IN THE NORTHERN DIVISION. A POWERFUL SNOWSTORM HIT MINNESOTA, HALTING TRAVEL ACROSS THE REGION. WE WERE CONTACTED BY A LOCAL PARTNER WHO HAD BEEN WORKING TO HELP TRANSPORT A SURVIVOR EXITING AN EXPLOITATIVE SITUATION FROM THE SOUTH TO THEIR PROGRAM. UNFORTUNATELY, THE INDIVIDUAL BECAME STRANDED IN MINNEAPOLIS DUE TO THE STORM.

DESPITE THE CHAOS AND LIMITED RESOURCES CAUSED BY THE SEVERE WEATHER, WE MANAGED TO SECURE A BED FOR THE SURVIVOR IN ONE OF OUR HOUSING PROGRAMS. OUR STAFF MET THE YOUNG PERSON AT THE BUS DEPOT, SAFELY TRANSPORTING THEM TO THE SECURE HOUSING WHERE THEY WERE PROVIDED WITH WARMTH, SAFETY, AND ALL NECESSARY RESOURCES.

A FEW DAYS LATER, ONCE THE STORM HAD PASSED, WE ARRANGED FOR THE INDIVIDUAL TO CONTINUE THEIR JOURNEY BY BUS, WHERE THEY WERE ABLE TO CONNECT WITH OUR LOCAL PARTNER FOR CONTINUED SUPPORT.







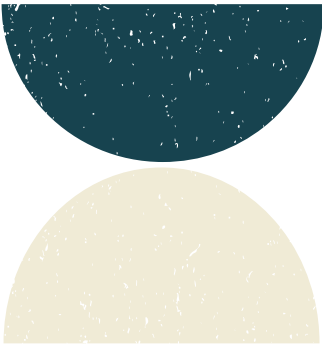
## **EASTERN TERRITORY PEARL ESSENCE NEW YORK, NY**

RECENTLY, PEARL ESSENCE, OUR NYC ANTI-TRAFFICKING PROGRAM WORKED WITH TWO CLIENTS WHO WERE RECOVERED BY LAW ENFORCEMENT AND BROUGHT TO OUR EMERGENCY HOUSING. WHEN THEY ARRIVED, THEY DID NOT HAVE ANYTHING BUT THE CLOTHES THEY WERE WEARING. OUR TEAM STEPPED IN RIGHT AWAY TO MEET THEIR BASIC NEEDS—PROVIDING CLOTHING, SHOES, HYGIENE PRODUCTS, FOOD, PHONES, METROCARDS, AND FOR ONE CLIENT, GREYHOUND BUS TICKETS.

FROM THE START, OUR FOCUS WAS ON MAKING SURE THEY FELT SAFE AND SUPPORTED AS WE WERE BUILDING TRUST AND RAPPORT. WE PROVIDED TRAUMA-INFORMED CASE MANAGEMENT AND WORKED CLOSELY WITH EACH OF THEM TO CREATE A PLAN FOR THEIR NEXT STEPS. BOTH CLIENTS SHARED THAT THEY FELT SAFE AND WERE ABLE TO TRUST US, WHICH REALLY SPEAKS TO THE ENVIRONMENT WE'RE WORKING HARD TO CREATE AT PEARL ESSENCE.

FOR ONE CLIENT, WHO IS ORIGINALLY FROM THE SOUTHERN TERRITORY, WE FOUND AND CONNECTED THEM WITH THE CORPS OFFICER IN THEIR HOMETOWN. THE OFFICER MET THEM AT THE BUS STOP, HELPED THEM GET TO THE CORPS, AND GOT THEM SET UP WITH LOCAL CASE MANAGEMENT SERVICES. THROUGH THESE CONNECTIONS, BOTH CLIENTS WERE ABLE TO SAFELY LINK WITH SUPPORT SYSTEMS BACK IN THEIR HOME STATES AND TAKE STEPS TOWARD REBUILDING THEIR LIVES.

THIS KIND OF CARE WOULDN'T BE POSSIBLE WITHOUT OUR DEDICATED CASE MANAGER, WHO INVESTS THE TIME NEEDED TO MEET CLIENTS RIGHT WHERE THEY ARE, PROVIDING THEM SUPPORT, DIGNITY AND SAFETY, HELPING THEM NAVIGATE THEIR UNIQUE SITUATIONS.



## SOUTHERN TERRITORY FORT WORTH, TX - MABEE CENTER

BEFORE JOINING THE THE SALVATION ARMY PROGRAM, MS ENDURED A DIFFICULT LIFE AS A HOMELESS VETERAN. HER JOURNEY WAS MARKED BY A SERIES OF CHALLENGES, INCLUDING A COMPLEX HISTORY OF TRAUMA THAT RESULTED FROM EXPERIENCES BEFORE JOINING THE MILITARY AND FROM HER MILITARY SERVICE, STRUGGLES WITH ADDICTION, AND DEEP, UNRESOLVED GRIEF STEMMING FROM PERSONAL LOSSES. SHE WAS LURED INTO SEX TRAFFICKING AFTER THE MILITARY. HER RELATIONSHIPS HAD ALSO SUFFERED, LEAVING HER FEELING FRACTURED AND DISCONNECTED FROM OTHERS. ISOLATED AND OVERWHELMED BY HER CIRCUMSTANCES, MS RECOGNIZED THE NEED FOR CHANGE AND SOUGHT ASSISTANCE THROUGH THE THE SALVATION ARMY, HOPING TO FIND SUPPORT AND A PATH TO HEALING.

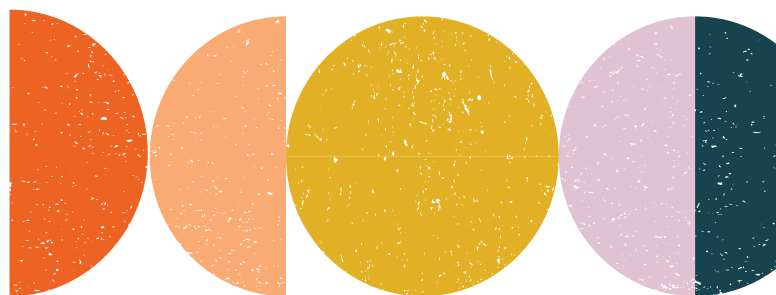
DESPITE FACING SETBACKS AND RELAPSES IN HER BATTLE WITH ADDICTION, MS COMMITTED TO HER SOBRIETY WITH UNWAVERING DETERMINATION. SHE SOUGHT GUIDANCE FROM A MENTOR AND ACTIVELY PARTICIPATED IN A TWELVE-STEP PROGRAM, WHICH BECAME CRUCIAL TO HER RECOVERY. THIS PROGRAM EQUIPPED HER WITH COPING STRATEGIES AND INSTILLED A STRONG SENSE OF ACCOUNTABILITY AND HOPE.

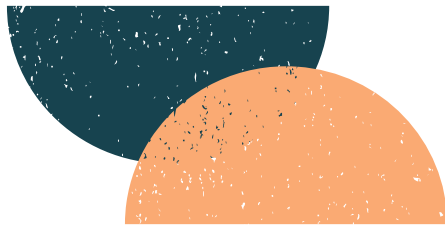
WHILE SHE NAVIGATED HER PATH TO RECOVERY IN THE THE SALVATION ARMY PROGRAM, MS DEVELOPED ESSENTIAL INTERPERSONAL COMMUNICATION SKILLS THAT EMPOWERED HER TO ENGAGE MORE EFFECTIVELY WITH OTHERS. SHE LEARNED THE VALUE OF EXPRESSING HER FEELINGS AND EXTENDING HEARTFELT APOLOGIES, WHICH HELPED MEND SOME OF HER PAST RELATIONSHIPS AND FOSTERED DEEPER CONNECTIONS. SHE DEMONSTRATED REMARKABLE RESILIENCE AND DETERMINATION THROUGHOUT HER STRUGGLES, EVENTUALLY CULTIVATING NEW, HEALTHY, SUPPORTIVE RELATIONSHIPS THAT GAVE HER A SENSE OF COMMUNITY AND BELONGING.

IN ADDITION TO HER PERSONAL GROWTH, MS ACQUIRED PRACTICAL LIFE SKILLS THAT ENHANCED HER INDEPENDENCE. SHE BECAME PROFICIENT IN USING PUBLIC TRANSPORTATION, ALLOWING HER GREATER MOBILITY AND THE ABILITY TO ATTEND APPOINTMENTS AND CONNECT WITH HER SUPPORT NETWORK. REGULAR MEETINGS WITH HER THERAPIST PROVIDED HER WITH A SAFE SPACE TO PROCESS HER EXPERIENCES WHILE ALSO HELPING HER DEVELOP EFFECTIVE COPING MECHANISMS.

MS UNEARTHED A PROFOUND PASSION FOR SELF-EXPRESSION THROUGH PAINTING AND DRAWING THROUGHOUT HER JOURNEY. THIS ARTISTIC OUTLET QUICKLY EVOLVED INTO A PIVOTAL COMPONENT OF HER HEALING PROCESS, PROVIDING HER A SAFE SPACE TO EXPLORE AND ARTICULATE HER DEEPEST EMOTIONS. AS SHE IMMERSED HERSELF IN HER CREATIVE WORKS, EACH BRUSHSTROKE AND SKETCH BECAME A VESSEL FOR HER EXPERIENCES, ALLOWING HER TO PROCESS HER THOUGHTS AND FEELINGS TANGIBLY. BEING CREATIVE HELPED HER COPE WITH HER PAST AND FOSTERED A SENSE OF EMPOWERMENT AND CLARITY, MARKING A TRANSFORMATIVE CHAPTER IN HER LIFE.

UPON COMPLETING THE PROGRAM, MS REACHED A SIGNIFICANT MILESTONE BY SECURING PERMANENT HOUSING THROUGH THE VETERANS AFFAIRS SUPPORTIVE HOUSING (VASH) PROGRAM. THIS ACHIEVEMENT REPRESENTED A CRITICAL TURNING POINT IN HER LIFE AS SHE FINALLY FOUND THE STABILITY FOR WHICH SHE HAD LONG SOUGHT. WITH HER NEW HOME, MS CAN FOCUS ON HER INDEPENDENCE AND PROMOTE HER RECOVERY. SHE HAS SET CLEAR GOALS FOR HER FUTURE. SHE IS ACTIVELY ENGAGED IN PERSONAL DEVELOPMENT ACTIVITIES, DEMONSTRATING HER DEDICATION TO ENHANCING HER OVERALL WELL-BEING AND BUILDING A POSITIVE LIFE FOR HERSELF. THIS NEWFOUND STABILITY FOSTERS HER GROWTH AND EMPOWERS HER TO RECLAIM CONTROL OVER HER LIFE AND MAKE MEANINGFUL CHOICES MOVING FORWARD.





## **WESTERN TERRITORY CASCADE DIVISION WOMEN'S & CHILDREN'S SHELTER**

AFTER LOSING HER BIRTH MOTHER TO ABANDONMENT, GINA\* WAS ADOPTED BY A CAUCASIAN FAMILY WHO, DESPITE THEIR BEST INTENTIONS, COULDN'T FULLY UNDERSTAND HER LIVED EXPERIENCE OR HELP WITH BASIC CULTURAL NEEDS LIKE CARING FOR HER HAIR. THE DEEP EMOTIONAL WOUNDS OF FEELING MISUNDERSTOOD AND NEGLECTED IN HER HOME LED GINA TO SEEK SAFETY ELSEWHERE.

IN SOME OF HER MOST VULNERABLE MOMENTS, SHE MET SOMEONE WHO SEEMED TO OFFER EVERYTHING HER HEART DESPERATELY LONGED FOR - GENUINE CARE, ATTENTION, AND UNDERSTANDING. HIS GESTURES - TREATING HER TO SALON VISITS, OPENING DOORS, MAKING HER FEEL CHERISHED - FILLED AN ACHING VOID OF BELONGING SHE HAD CARRIED SINCE CHILDHOOD. HOWEVER, THIS KINDNESS CAME AT A PRICE. GINA INITIALLY VIEWED HIS BEHAVIOR AS GENEROSITY, BUT IT MASKED DARKER INTENTIONS. WHAT BEGAN AS RUNNING ERRANDS GRADUALLY EVOLVED INTO EXPLOITATION AND TRAFFICKING.

TO COPE WITH THE RESULTING TRAUMA, BETRAYAL, AND EMOTIONAL PAIN, SHE BEGAN USING DRUGS. UNFORTUNATELY, THE DEVELOPING ADDICTION FURTHER COMPLICATED HER ALREADY CHALLENGING CIRCUMSTANCES.

A TURNING POINT CAME WHEN GINA FOUND REFUGE AT THE WEST WOMEN'S AND CHILDREN'S SHELTER. WITHIN THIS SAFE ENVIRONMENT, SHE BEGAN REBUILDING HER LIFE STEP BY STEP. SHE PURSUED EDUCATIONAL GOALS BY WORKING TOWARD

HER GED AND LEARNING TO DRIVE. THE SHELTER'S SUPPORTIVE ATMOSPHERE EMPOWERED HER TO MAKE POSITIVE CHOICES FOR HER FUTURE.

WORKING CLOSELY WITH HER PRIMARY ADVOCATE AND PARTNER ORGANIZATIONS, SHE EMBARKED ON A JOURNEY OF RECOVERY. THROUGH THE SHELTER'S RESOURCE COORDINATION TEAM, SHE SECURED A HOUSING VOUCHER AND ESTABLISHED A STABLE HOME OF HER OWN. NOW IN RECOVERY, GINA IS EXPECTING HER FIRST CHILD AND EXPERIENCES DEEP GRATITUDE FOR THE OPPORTUNITY TO MOVE BEYOND HER PAINFUL PAST. HER STORY CONTINUES AS SHE EMBRACES A FUTURE FILLED WITH HOPE AND POSSIBILITY.



*\*NAMES HAVE BEEN CHANGED FOR SAFETY PURPOSES.*

IF YOU SUSPECT SOMEONE HAS EXPERIENCED HUMAN TRAFFICKING, OR IS A SURVIVOR OF HUMAN TRAFFICKING AND NEEDS HELP, CALL THE NATIONAL HUMAN TRAFFICKING HOTLINE.

**24-HOUR TOLL-FREE CRISIS LINE**  
**CALL 1.888.3737.888**  
**OR TEXT "BEFREE"**

THIS NUMBER IS AVAILABLE TO HELP SURVIVORS,  
ANSWER QUESTIONS, AND REPORT TIPS.

## CONNECT WITH US!

### ELYSE DOBNEY

USA CENTRAL TERRITORY  
SOCIAL JUSTICE AND CITY MISSION DIRECTOR  
ELYSE.DOBNEY@USC.SALVATIONARMY.ORG

### ARIELLE CURRY

USA EASTERN TERRITORY  
ANTI-HUMAN TRAFFICKING COORDINATOR  
ARIELLE.CURRY@USE.SALVATIONARMY.ORG

### SHEENA EVANS

USA SOUTHERN TERRITORY  
TERRITORIAL SERVICES COORDINATOR AGAINST HUMAN  
AND SEX TRAFFICKING  
SHEENA.EVANS@USS.SALVATIONARMY.ORG

### JACQUI LARSSON

USA WESTERN TERRITORY  
TERRITORIAL SOCIAL JUSTICE MINISTRIES DIRECTOR  
JACQUI.LARSSON@USW.SALVATIONARMY.ORG



@SAJUSTICEUS



WWW.SAJUSTICE.US



@SAJUSTICEUS



#FIGHTFORFREEDOM

## JOIN THE FIGHT—WAYS TO GET INVOLVED

- CONTACT US TO HOST A TRAINING OR PANEL DISCUSSION
- COLLECT TANGIBLE ITEMS IN OUR DROP-IN CENTERS AND CASE MANAGEMENT PROGRAMS
- DONATE TO OUR WORK FINANCIALLY – YOUR CONTRIBUTION GOES A LONG WAY
- JOIN US AS WE PRAY FOR THOSE AFFECTED BY HUMAN TRAFFICKING, THAT THEY WOULD EXPERIENCE FULL HEALING AND RESTORATION.
- ADVOCATE FOR LOCAL AND FEDERAL LEGISLATIVE CHANGE



**SA JUSTICE**  
on earth, as it is in heaven

**ON EARTH**



**AS IT IS IN *HEAVEN***

